

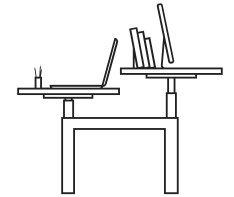


# SOS2

**Product  
Brochure**

# SOS2





Productive, healthy and efficient workspaces encourage employees to move more.

---

Introducing SOS2 - the latest evolution of our celebrated SOS range of sit-stand workstations.

SOS2 retains all the functionality and benefits of our original SOS sit-stand desk (first launched in 2014) as well as exciting new features designed to improve choice, aid workplace agility, maintain the design aesthetic and reduce cost.



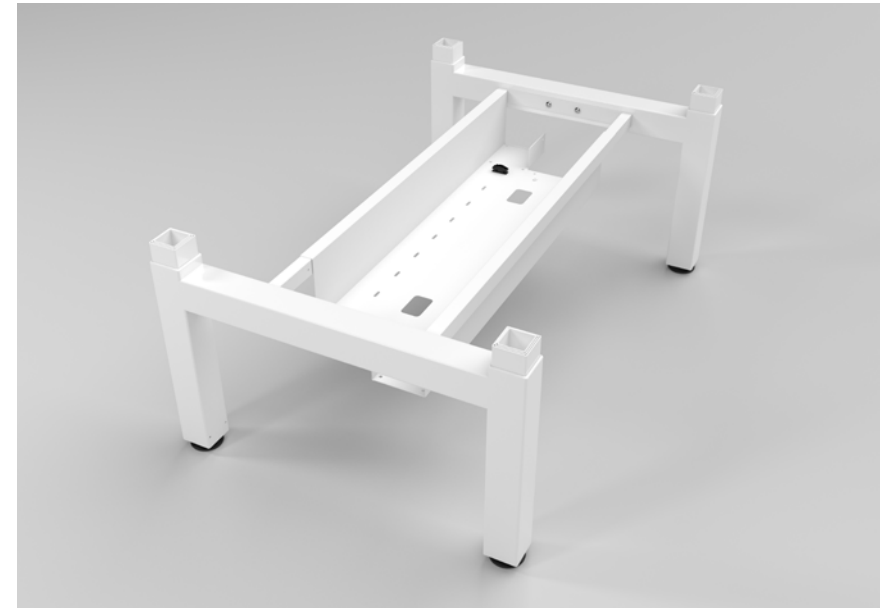


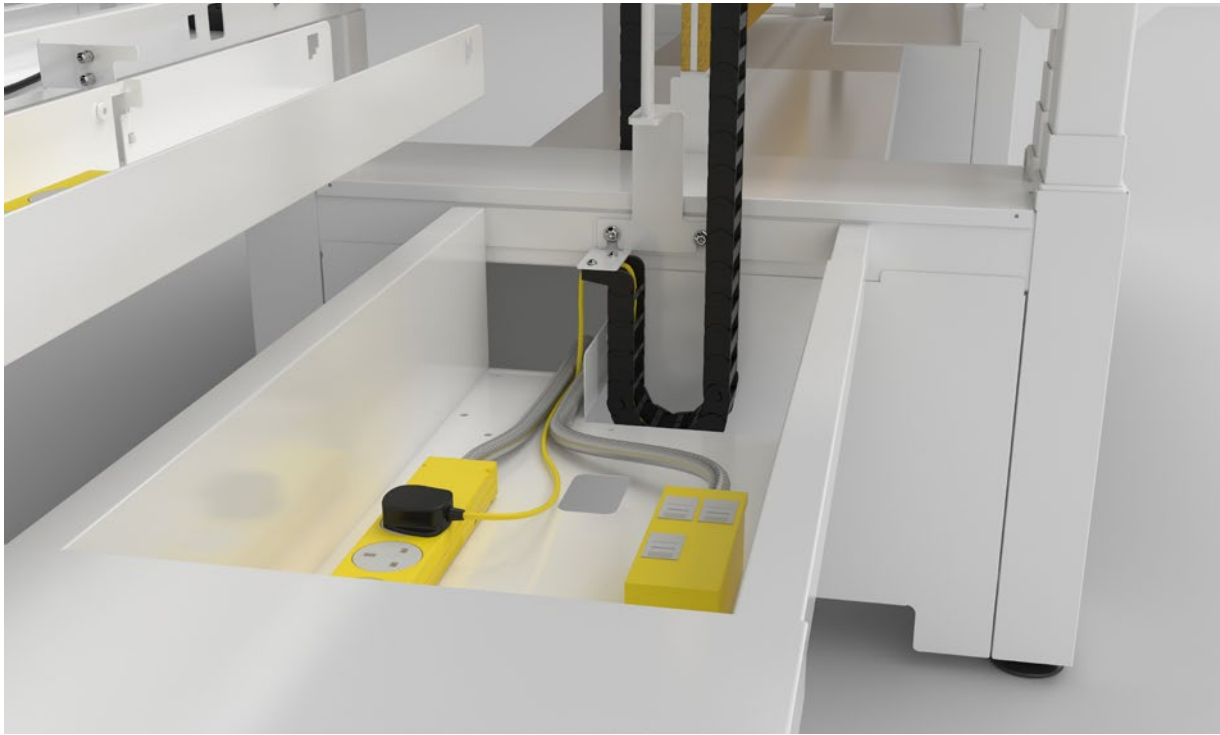
# SOS2



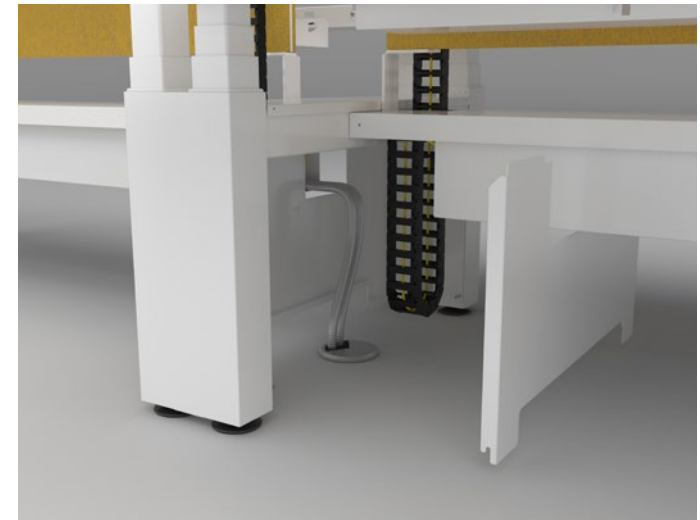
## Product Main Features

- Hot-swappable actuators allow for easy configuration changes between fixed and height-adjustable.
- High-capacity variants for both upper and lower cable management for increased cable requirements.
- Intermediate leg offering to reduce cost on long linked runs.
- Two tiers of linking allow for higher versatility and client choice.
- Sliding top option for easy cable access at rear of workstation.
- Leg frame cladding allows for invisible and protected cable entry while enabling easy management and cable access.
- Fully cable managed system for linked workstations; cables running between workstations are secure and removed from sight.
- Protected umbilical/unobstructed legroom allows for a variety of pedestals to be used to maximise legroom and comfort.
- Mobile option available on braked castors for agile working.



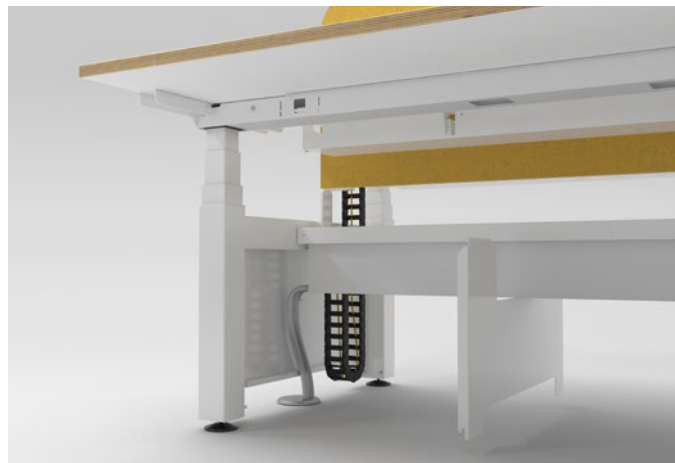


The spacious lower cable management tray comes in two sizes: standard (31,365cm<sup>3</sup>) and high-capacity (53,550cm<sup>3</sup>). The high-capacity tray is 70% bigger than the standard one.

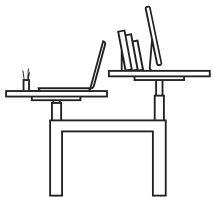


---

The upgraded SOS2 solution comes with several new features. These workstations are available in high-capacity variants for both upper and lower cable management.



Intermediate and end-leg frame cladding create a void that allows a great spatial capacity. The panels are very simple to attach or remove using reliable magnetic clips.





# Smooth & Precise

- DPG1C**
- Up/down drive.
  - 4 memory positions.
  - Light strip reminder.
  - Display.



- DPG1M**
- Up/down drive.
  - 2 memory positions.
  - LED diode reminder.

- DPG1K**
- Up/down drive.



SOS2 uses Linak's lifting columns, a true industry standard for inline actuators. The compact, square-shaped design was developed to fulfil the market requirements for a low built-in dimension and at the same time a long stroke length.

## PIEZO™ System

As standard, the Linak's Columns feature PIEZO™ – a hardware-based, anti-collision system.

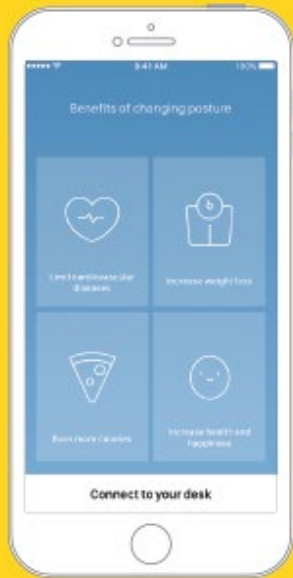
The integrated sensor detects obstacles from within the column and minimises the risk for damages on a desk caused by the squeezing or blocking of objects when moving upwards or downwards. Piezo is a stable solution that works independently of load and temperature.



## Actuator Features

- The 3-part inline design presents a stroke length of 660mm.
- Columns incorporate invisible gliding pads.
- Minimum spacing between column profiles.
- PVC-free as standard.
- No crossbar column design creates unobstructed legroom.
- Compatible with the DESKLINE ZERO™ control boxes and desk panels.
- Pleasant low sound level.
- 70kg. lifting capability per column.
- Class II low voltage double insulated classification.

# Personal Standing Assistant



The Linak Desk Control Software is all about health and ergonomics. It allows users to control the height of their worksurface, either from their computers or mobile phones. It's also a motivational tool devised to help people make healthy changes in their lifestyles by encouraging them to be active.

## Stand Up For Your Health

Employees who use height-adjustable desks are 71% more focused, 66% more productive and 33% less stressed.

Standing 15 minutes per hour will increase weight loss and improve mental health. It will burn 20,000 more calories a year which corresponds to 6 full marathons and make you healthier and happier.

## Desk Control Software Features

- Worksurface adjusts from 640mm to 1290mm in just 18 seconds.
- Worksurface control right from the keyboard or mobile phone.
- Readout can be detailed in calories or time.
- Optional 2 or 4 user-settable memory positions for desk height.
- Accurate calorie count when adding user's weight.
- User can choose how many minutes to stand each hour or how many calories to burn.
- Users can choose how many sessions of standing-time are best for them.
- Statistics.

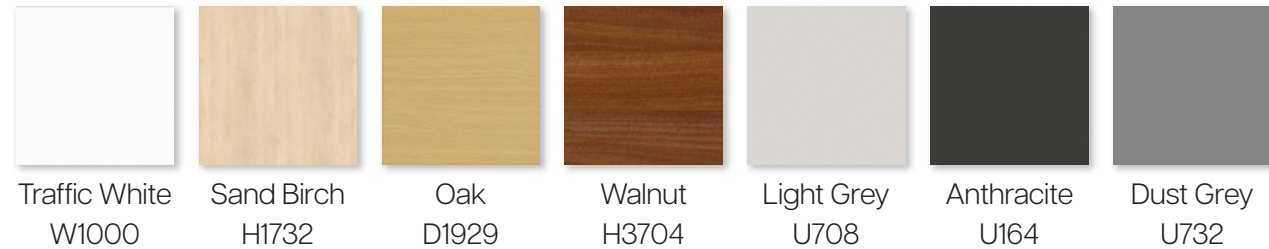
Sources: National Center for Biotechnology Information, The Council for Health and Disease Prevention, Center for Disease Control and Prevention.

# The Finishing Touch

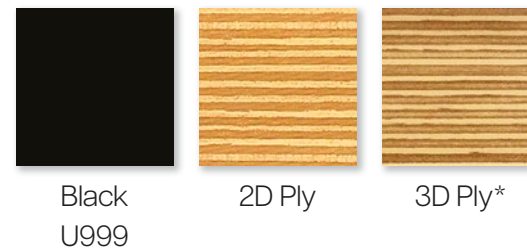
Staverton's workstations can be customised to suit any personal style and taste with a selected range of high-quality finishes. Clients can also personalise the screens that best fit their needs by choosing from diverse fabric alternatives, and various textures and colours.

SOS2's optional 18mm top, provides the possibility of a much wider selection of additional colours.

## Standard Worksurfaces / Matched Edging (25mm)



## Contrast Edging



## Frame



## MFC Plain Colours x36 Available on 18mm Worksurfaces, e.g.

Choose more colour options from the Swiss Krono One World Collection [here](#).



\*Premium edge finish '3D Ply'.



# Count on Us

## Staverton Introduction

Staverton has a longstanding history in office furniture design. We are recognised for bringing form, function and flexibility together without compromise. Our bespoke approach, innovative design and fine craftsmanship have earned us a name as a responsible and reliable award-winning British manufacturer.

## Lead Time

Having our own production facility in South Yorkshire and the latest BAZ processing machinery installed in the factory allows Staverton to have a most competitive lead time. The benefits of our 38,000 sq ft of space for assembly and design become evident by the short time between the placement of an order and the delivery of the product.

## Warranty

All of our systems have a lifetime warranty on the framework and a 10 year warranty on top panels. Moving parts and electrical items have a 5 year warranty. The warranty is valid for products supplied in mainland UK, used during normal office hours and covers all defects in materials and workmanship, but does not apply to damage resulting from neglect, misuse or accidents.

## Resources

At Staverton we understand the importance of supporting our clients, ensuring our designs work to meet their specific requirements. A comprehensive set of space planning tools and resources such as detailed product specifications, image library, render graphics, CAD and BIM files is available for them.

## Repair & Maintenance

Regular repair and maintenance is essential to keep screens and upholstered furniture looking at its best. We can provide extensive furniture cleaning care tips, conservation advice, repair instructions and recommendations that will keep Staverton's products looking great for a long time.

## Showroom

Conveniently located in London, our newly refurbished Clerkenwell showroom exhibits Staverton's wide range of products. All of our clients are welcome to visit us, discover our complete catalogue and have a close-up look at our offering.

## Quality Policy

Our commercial and management objectives are to provide products and services that consistently meet the needs and expectations of our clients, whilst operating in compliance with all regulatory requirements. To ensure this goal we have British Standard BS EN ISO 9001:2015 Quality System Model accreditation.

## Environmental

We believe that helping to protect the environment shouldn't be a static process but an ongoing one. To this end we are currently developing partnerships with several environmental consultancies in order to enable us to help our clients manage the disposal of their end-of-life office furniture in a responsible manner.

Staverton was one of the first UK office furniture companies to achieve the ISO 14001 certification. We are proud to hold the BM TRADA's registration number –001 as well as the current ISO 14001:2015 certificate.



The mark of responsible forestry



# We're Here to Help



---

Request prices and information via email:  
[salesdesk@staverton.co.uk](mailto:salesdesk@staverton.co.uk)



## Showroom

17-18 Hayward's Place  
Clerkenwell  
London  
EC1R 0EQ  
+44 (0)20 3794 1200



## Factory

Micklebring Way  
Rotherham  
South Yorkshire  
S66 8QD  
+44 (0)1709 531931



[staverton.co.uk](http://staverton.co.uk)

