

SL2

**Product
Brochure**

SL2



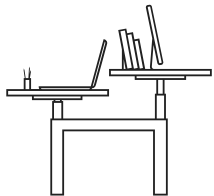
SL2 is an innovative, feature-packed range of sit stand workstations for the modern workplace.

As the lighter-weight version of the celebrated sit-stand desk range SOS – SL2 offers our trademark durability and innovative approach to cable management as well as improved cost efficiency, flexibility and longevity.



SL2's clean lines offer a simple aesthetic to complement open-plan offices and space-challenged workplaces.

Built to last, the range also guarantees flexibility and can be modified with ease.



SL2



SL2's high-quality cable management system ensures a neat, cable-free workspace.



SL2's simplified bridge, supported with a cable basket and umbilical cable riser, can also be used to mount screens.

Shared componentry with the SOS range – such as the square DL-19 actuator from Linak and swappable actuator columns – build longevity into the range. Products can start life as fixed height and adapt to sit stand as needs change with minimal effort, cost and waste.

The SL2 range includes a corner desk option and castors, as standard. The range is completely customisable and available in a wide variety of colours and finishes.

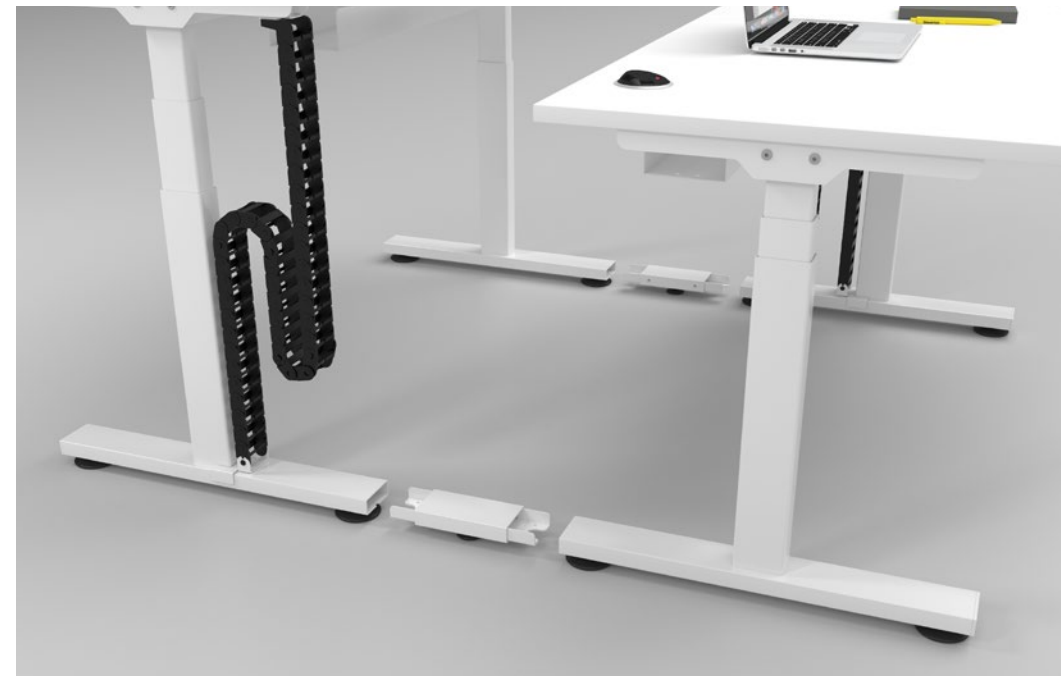




SL2 range is highly versatile and can adapt to any office environment. Workstations can be used individually or connected together to form long benches, which are well-suited to collaboration and teamwork.

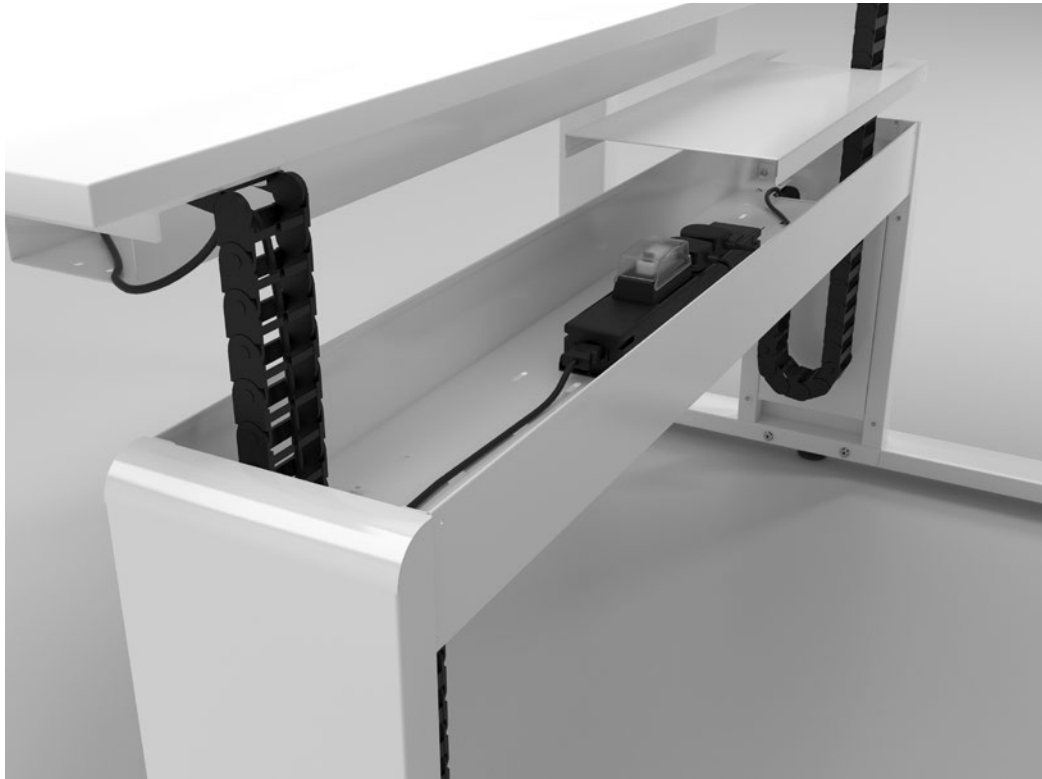
Product Main Features

- Minimal light-weight frame.
- Versatile cable-management bridge.
- Caterpillar-style, vertical cable riser.
- Optional 18mm top facilitates the use of a wide variety of finishes.
- Fixed height, corner desk and mobile options as standard.
- Flexible configuration.



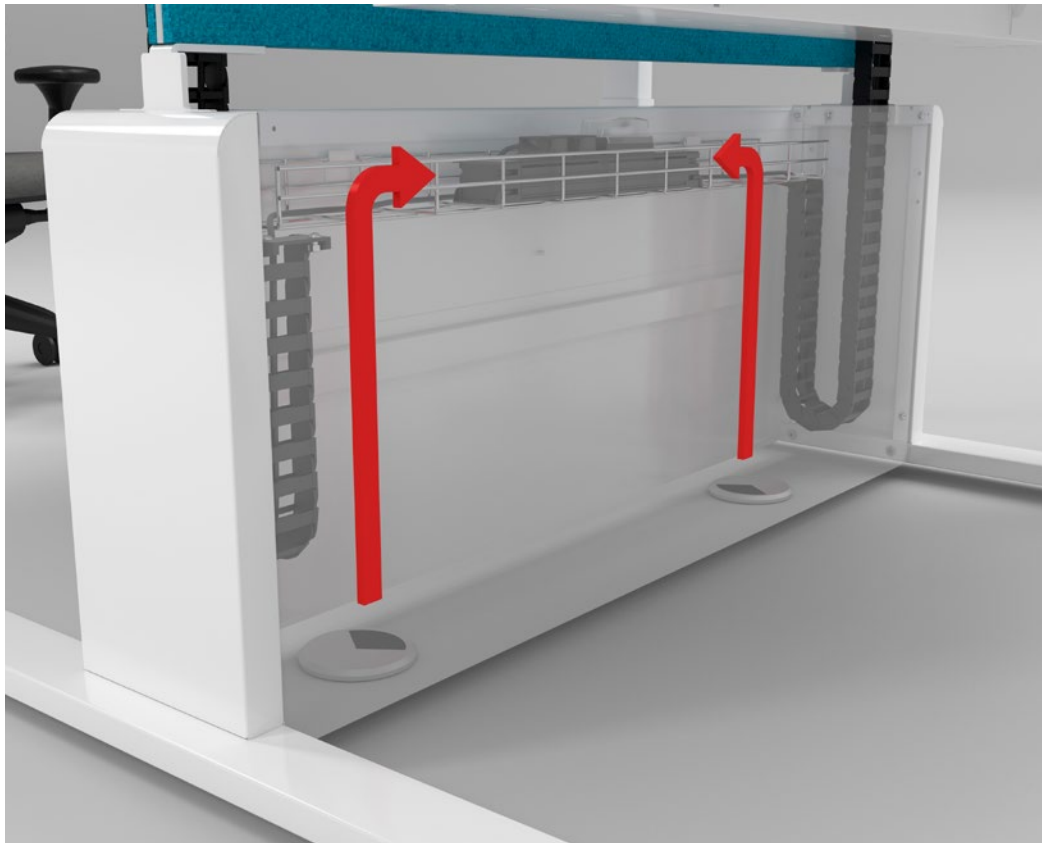
Workstation Linking

All SL2 bench workstations can be fitted with an intermediate upstand column that allows them to be linked together side by side. The removable column panels provide easy access to the cables.



The Bridge

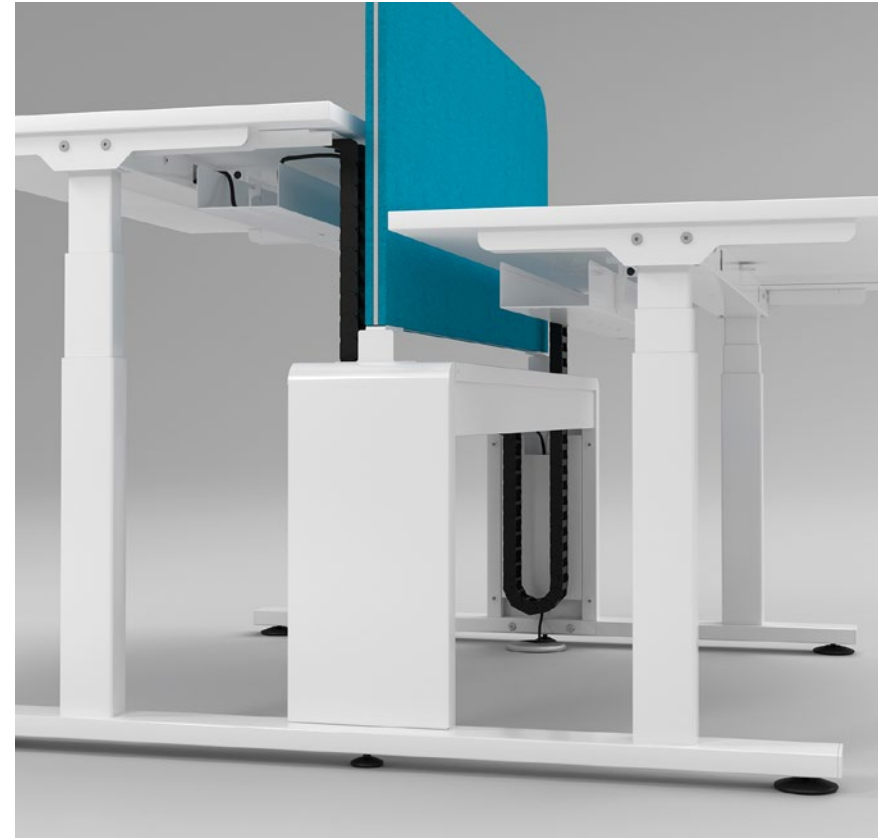
One of SL2's key features is the optional cable management bridge – a retrofittable item that accommodates power bars, PDUs and GOP boxes.



The bridge can be specified with vertical-cladding panels to form a secure bulk-capacity cable riser along the full width of the bench, masking all floor cable outlets from view.

Cable Management

SL2's cable management system is based on the use of upper and lower cable trays which are connected by a robust, industrial, caterpillar-style vertical riser. This prevents damage by keeping cables in a safe and secured position.



Smooth & Precise

DPG1C

- Up/down drive.
- 4 memory positions.
- Light strip reminder.
- Display.

 Bluetooth



DPG1M

- Up/down drive.
- 2 memory positions.
- LED diode reminder.

 Bluetooth



DPG1K

- Up/down drive.



SL2 uses Linak's lifting columns, a true industry standard for inline actuators. The compact, square-shaped design meets the market requirement for a low built-in dimension and long stroke length.

PIEZO™ System

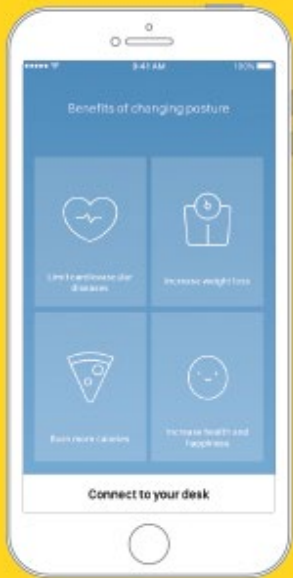
As standard, the Linak's Columns feature PIEZO™ – a hardware-based, anti-collision system.

The integrated sensor minimises the risk of damage when the desk is in motion, as it detects obstacles within the column. Piezo is a stable solution that works independently of load and temperature.

Actuator Features

- The 3-part inline design presents a stroke length of 660mm.
- Columns incorporate invisible gliding pads.
- Minimum spacing between column profiles.
- PVC-free as standard.
- No crossbar column design creates unobstructed legroom.
- Compatible with the DESKLINE ZERO™ control boxes and desk panels.
- Pleasant low sound level.
- 70kg. lifting capability per column.
- Class II low voltage double insulated classification.

Personal Standing Assistant



The Linak Desk Control Software is all about health and ergonomics. It allows users to control the height of their worksurface, either from their computer or mobile phone. It is also a motivational tool as the timer can be used to encourage people to change position and be more active.

Stand Up For Your Health

Employees who use height-adjustable desks are 71% more focused, 66% more productive and 33% less stressed.*

Standing 15 minutes each hour helps to lose weight, improves mental health, burns 20,000 extra calories a year—which corresponds to six full marathons—and makes people healthier and happier.

Desk Control Software Features

- Worksurface adjusts from 640mm to 1290mm in just 18 seconds.
- Worksurface control right from the keyboard or mobile phone.
- Readout can be detailed in calories or time.
- Optional 2 or 4 user-settable memory positions for desk height.
- Accurate calorie count when adding user's weight.
- User can choose how many minutes to stand or how many calories to burn.
- Users can choose how many sessions of standing-time are best for them.
- Usage statistics.

*Sources: National Center for Biotechnology Information, The Council for Health and Disease Prevention, American Heart Association, Center for Disease Control and Prevention.

The Finishing Touch



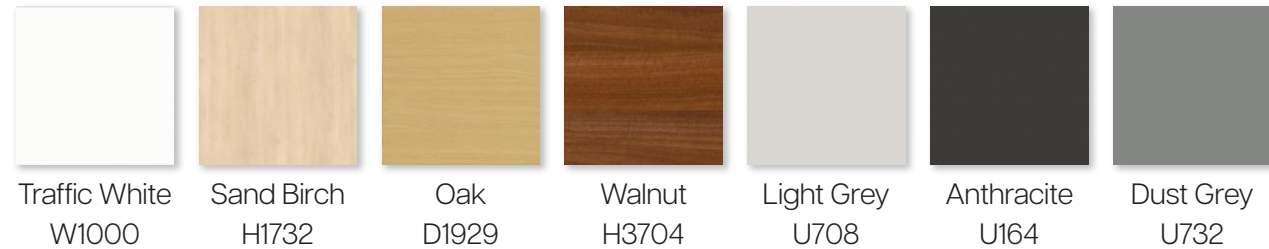
Staverton's SL2 workstations can be customised with a range of high-quality finishes.

SL2's optional 18mm top, provides the possibility of a much wider selection of additional colours.

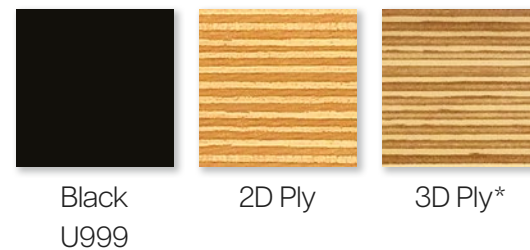
Clients can personalise screens by choosing from a diverse range of fabric alternatives, textures and colours.

A digital configurator tool can be found online [here!](#)

Standard Worksurfaces / Matched Edging (25mm)



Contrast Edging



Frame



MFC Plain Colours x36 Available on 18mm Worksurfaces, e.g.

Choose more colour options from the Swiss Krono One World Collection [here](#).



*Premium edge finish '3D Ply'.

Count on Us

Staverton Introduction

Staverton is an award-winning British manufacturer of office furniture. Thanks to our bespoke design approach and quality craftsmanship, we have been solving clients' furniture challenges for decades. It's how we've earned an enviable reputation as innovators – combining form, function and flexibility to meet clients' needs, without compromise.

Lead Time

Having our own production facility in South Yorkshire and the latest BAZ processing machinery installed in the factory allows Staverton to have a most competitive lead time. The benefits of our 38,000 sq ft of space for assembly and design become evident by the short time between the placement of an order and the delivery of the product.

Warranty

All Staverton systems have a lifetime warranty on framework and a 10-year warranty on top panels. Moving parts and electrical items have a five-year warranty. The warranty is valid for products supplied in mainland UK and used during normal office hours. It covers all defects in materials and workmanship, but does not apply to damage resulting from neglect, misuse or accidents.

Resources

At Staverton we understand the importance of supporting our clients, ensuring our designs work to meet their specific requirements. A comprehensive set of space planning tools and resources such as detailed product specifications, image library, render graphics, CAD and BIM files are all available.

Repair & Maintenance

Regular repair and maintenance is essential to keep screens and upholstered furniture looking at its best. We can provide extensive furniture cleaning care tips, conservation advice, repair instructions and recommendations to help keep all Staverton products looking their best.

Showroom

Conveniently located in London, our newly refurbished Clerkenwell showroom exhibits Staverton's wide range of products. Clients are welcome to visit and see our complete product range.

Quality Policy

Our commercial and management objectives are to provide products and services that consistently meet the needs and expectations of our clients, whilst operating in compliance with all regulatory requirements. To ensure this, we hold the British Standard BS EN ISO 9001:2015 Quality System Model accreditation.

Environmental

Our commitment to sustainability and environmental best practice is continual. As part of this we are working with clients to manage the disposal of their end-of-life office furniture in a responsible manner.

Staverton was one of the first UK office furniture companies to achieve the ISO 14001 certification. We are proud to hold the BM TRADA's registration number –001 as well as the current ISO 14001:2015 certificate.



012

The mark of responsible forestry

We're Here to Help



Request prices and information via email:
salesdesk@staverton.co.uk



Showroom

17-18 Hayward's Place
Clerkenwell
London
EC1R 0EQ
+44 (0)20 3794 1200



Factory

Micklebring Way
Rotherham
South Yorkshire
S66 8QD
+44 (0)1709 531931



staverton.co.uk

